

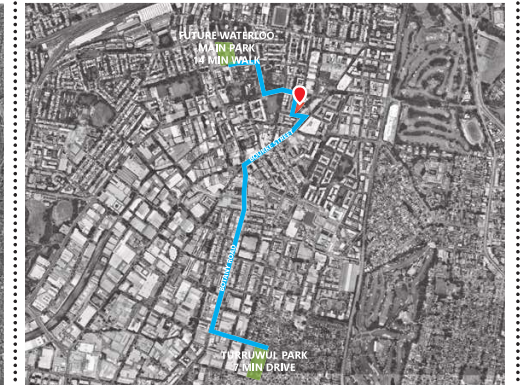
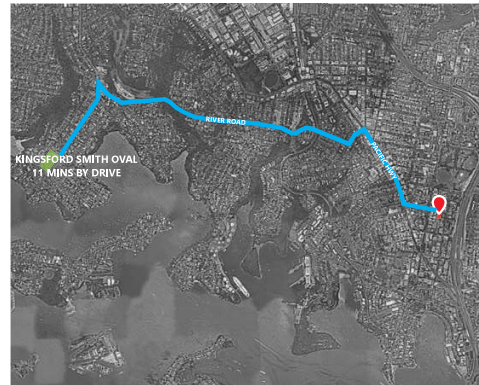
# **Attachment A2-4**

**Urban Design Report**

# 06

## PROGRAMMATIC OPERATIONS

# VERTICAL SCHOOL PRECEDENTS - COMPARISON



**INNER SYDNEY HIGH SCHOOL**

- Y7 - Y12
- ~ 1200 STUDENTS
- ~5240 SQM OUTDOOR (4.4 SQM/ STUDENT)
- 1 MIN WALK TO PRINCE ALFRED PARK

**ULTIMO PUBLIC SCHOOL**

- K-Y6
- ~ 900 STUDENTS
- ~4500 SQM OUTDOOR (5 SQM/ STUDENT)
- 3 MIN WALK TO WENTWORTH PARK

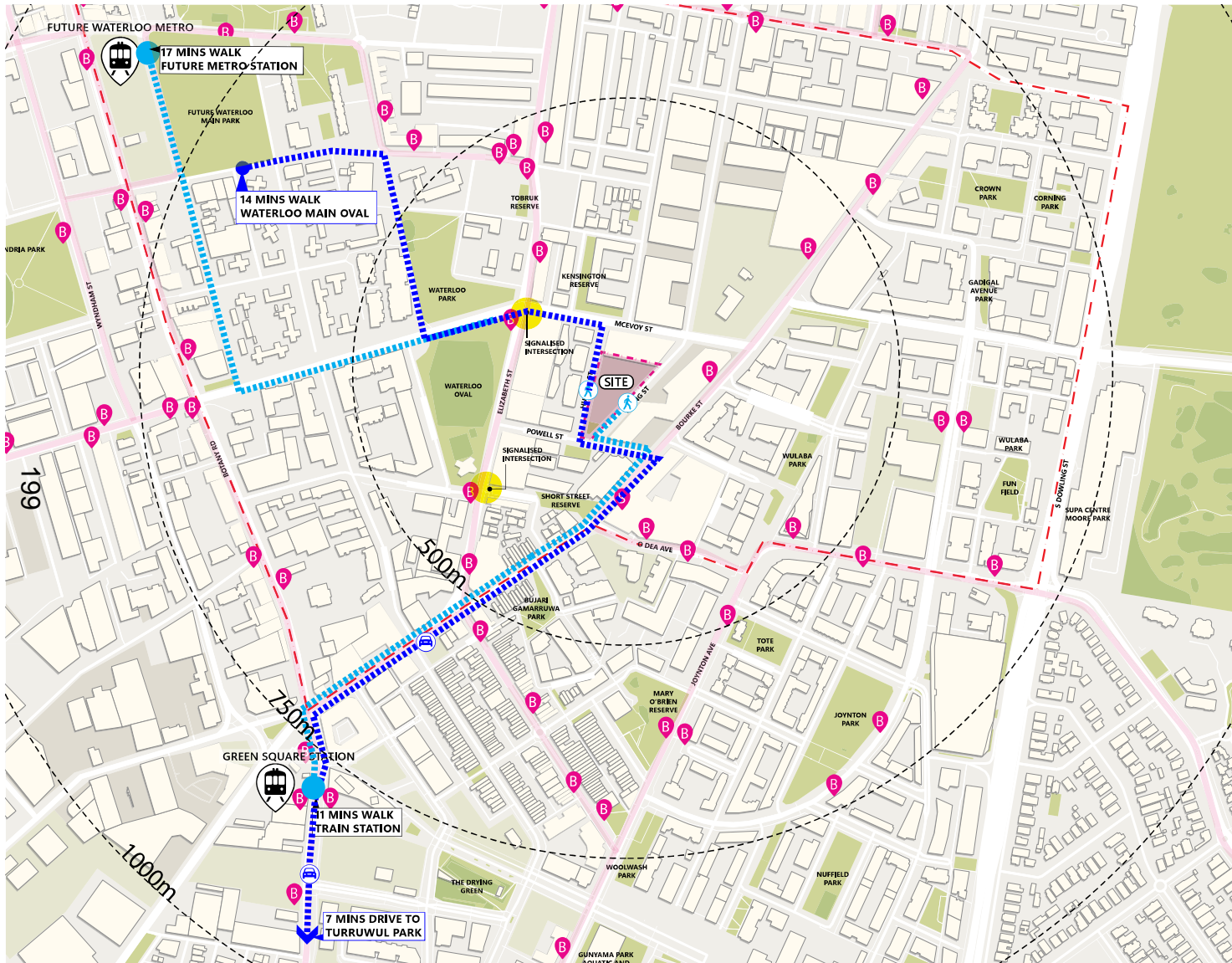
**REDDAM HOUSE NORTH SYDNEY CAMPUS**

- K-Y12
- ~ 1550 STUDENTS
- ~3410 SQM OUTDOOR (2.2 SQM/ STUDENT)
- 11 MIN WALK TO KINGSFORD SMITH OVAL

**PROPOSED REFERENCE SCHEME**

- K-Y12
- ~ 800 STUDENTS
- ~4975 SQM OUTDOOR (6.2 SQM/ STUDENT)
- 7 MIN DRIVE TO TURRUWUL PARK  
14 MIN WALK TO FUTURE WATERLOO MAIN PARK

# CONNECTIVITY TO LOCAL FACILITIES AND TRANSPORT



The school currently achieves 6.2sqm on-site open space per student. Regarding access to open space off-site, it is currently proposed that students will have access to Turruwul Park, which is a 7 minute drive from the school. This park includes a soccer field, two tennis courts, a tennis wall, and cricket facilities. Council has confirmed the space has availability Monday to Friday 8:00am-5:00pm.

Additionally, the future Waterloo Main Park provides two hectares of open space and include two playing fields. It is approximately 800m walk from the proposed school site and provides another option for potential shared use. If this could be achieved this option would be the preferred option given its proximity to the site.

Regarding connectivity to transport, the school is also well connected to Green Square (11min walk) as well as the future Waterloo Metro Station (17min walk).



FUTURE WATERLOO MAIN PARK



TURRUWUL PARK

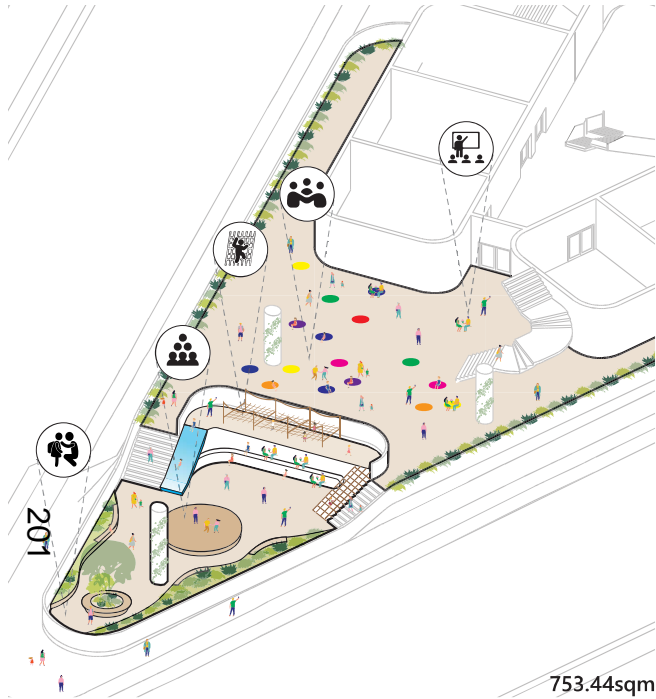
# SCHOOL SPACES BREAKDOWN

YEAR	STUDENTS	GLS	SPECIALIST	LIBRARY	SCHOOL GFA	OUTDOOR
K	40	2				
1	40	2				
2	40	2				
3	40	2	0			
4	40	2				
5	40	2				
6	40	2				
				870 SQM	870 SQM	8,000 SQM
7	90					
8	90					
9	90	31	13			
10	90					
11	80					
12	80					
<b>200</b> <b>TOTAL REQ.*</b> <small>*AS PER SCHOOL OPERATION'S CONSULTANT'S ADVICE</small>	800	45	13	870 SQM	9,694 SQM	8,000 SQM (10 SQM PER STUDENT)
<b>TOTAL PROV.</b>		45	13	846 SQM	10,609 SQM	4,975 SQM (6.2 SQM PER STUDENT)

The reference scheme has been tailored to reflect the required spaces needed for a school of 800 students. The following table summarises the required spaces as well as what has been provided in the reference scheme.

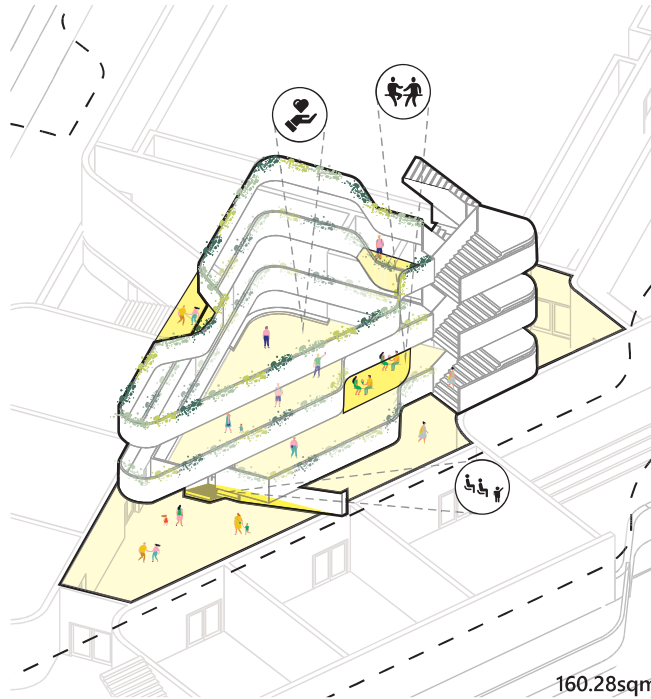
# VARIETY OF OPEN SPACES

## OPEN SPACE ON GROUND



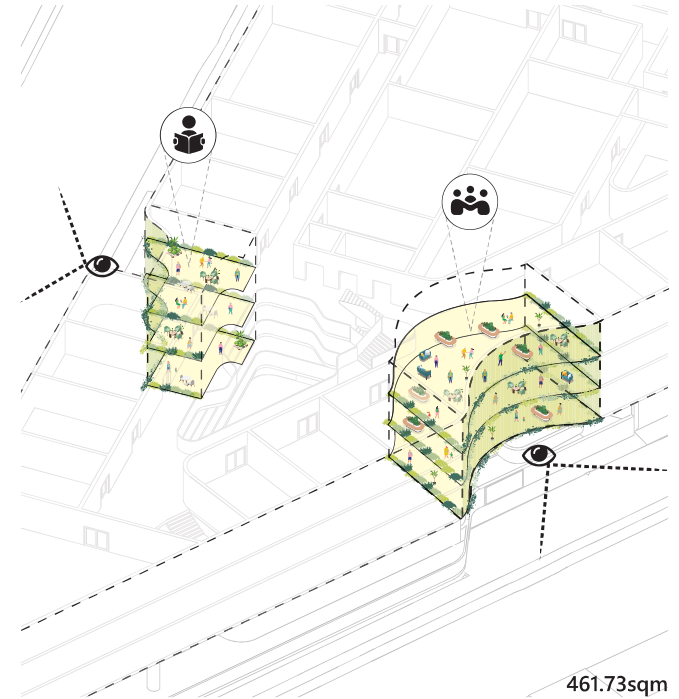
753.44sqm

## SCHOOL ATRIUM



160.28sqm

## PASSIVE LEARNING SPACES



461.73sqm



PRIMARY PLAY  
ADAPTIVE SPACE  
CONNECTION WITH COMMUNITY



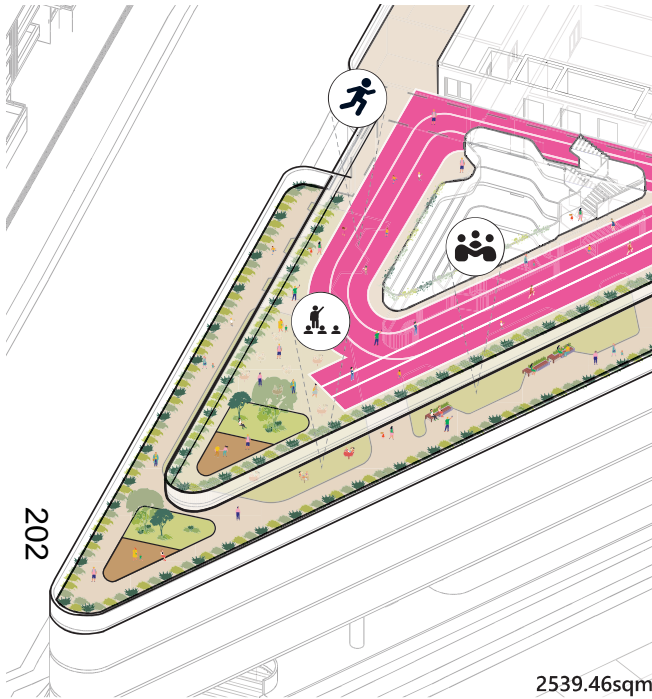
LEARNING AREA  
COMMUNAL SPACE  
BREAKOUT AREA



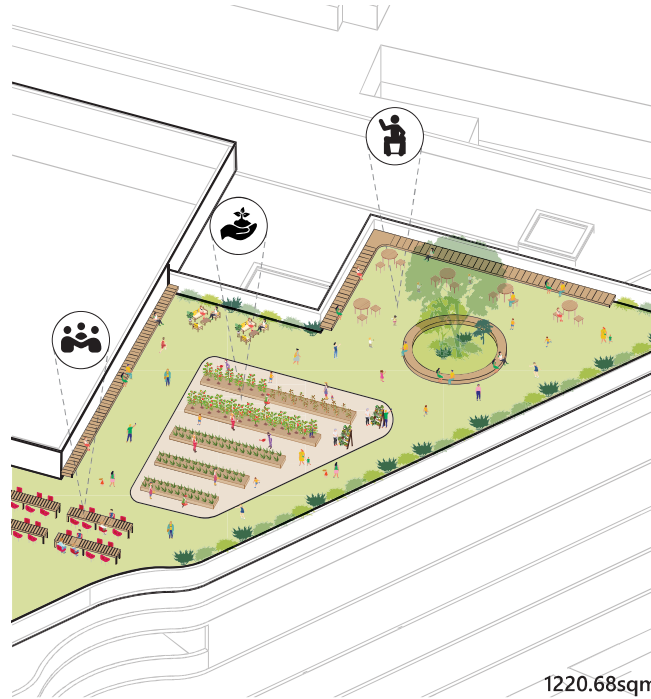
SECONDARY PLAY ZONE  
OUTDOOR LEARNING  
ADAPTIVE SPACE

# VARIETY OF OPEN SPACES

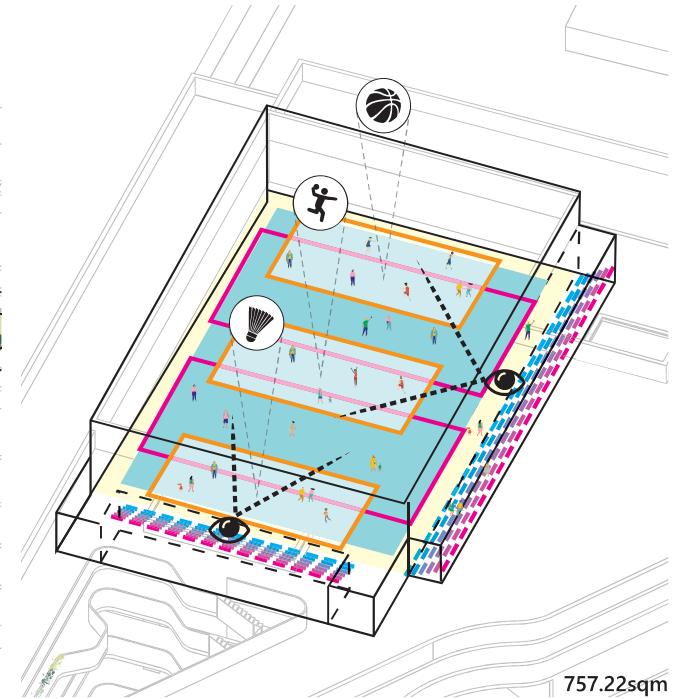
### LEVEL 4-5 OPEN SPACE



### ROOFTOP OPEN SPACE



### ROOFTOP BASKETBALL COURT



OUTDOOR LEARNING  
 OUTDOOR GYM  
 CONNECTION WITH ENVIRONMENT



FOOD PRODUCTION  
 OUTDOOR LEARNING  
 COMMUNAL SPACE

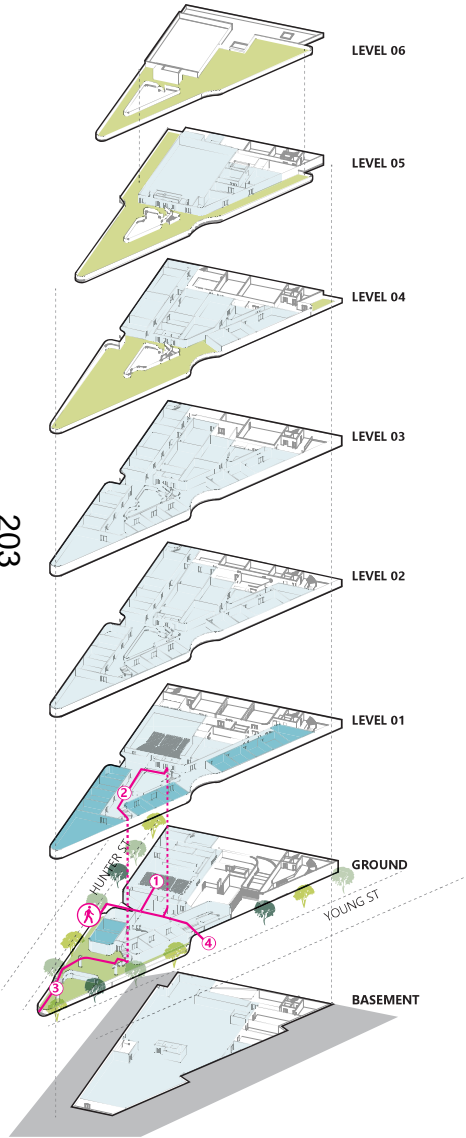


SPORT AREA  
 HOSTING EVENTS  
 ADAPTIVE SPACE

PROGRAMMATIC OPERATIONS  
MIXED USE - MODES

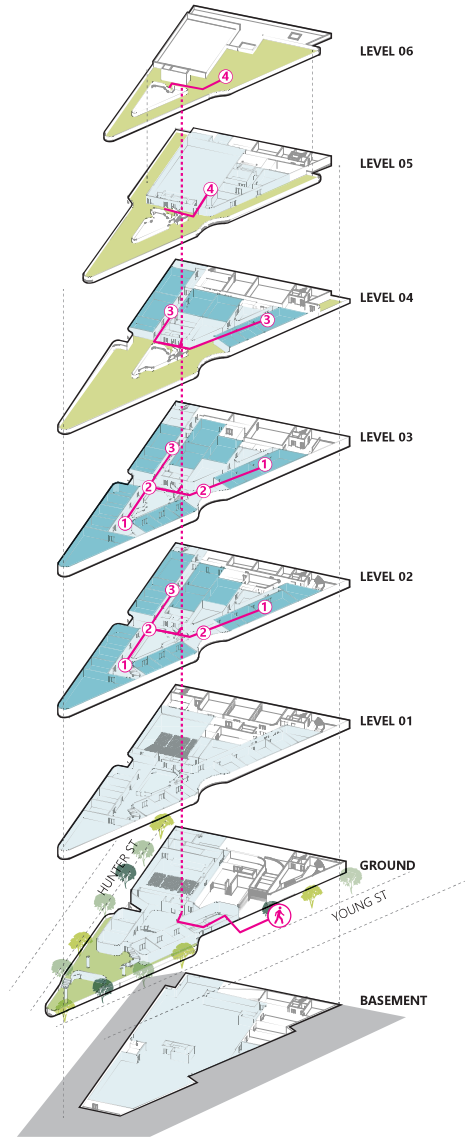
203

SCHOOL - PRIMARY  
Weekday



1. In the morning, students go to the auditorium for morning assembly.
2. They then proceed to their classrooms where they engage in various subjects such as english, and mathematics.
- 3 In the afternoon, students move to the amphitheatre (open space on ground) for science class for collaborative learning.
4. At the end of the day, students wait at the pick-up zone on ground for pick up from their parents.

SCHOOL - SECONDARY  
Weekday



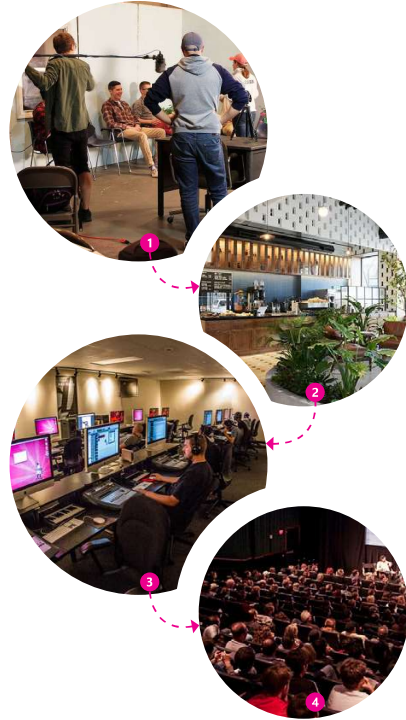
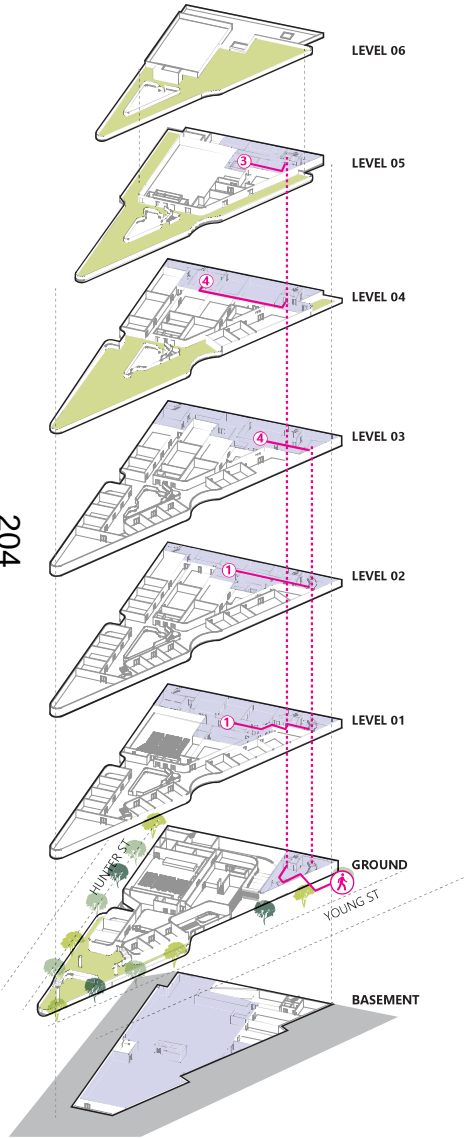
1. In the morning, students move to their classrooms after morning assembly for academic lessons.
2. During recess/lunch time, students go to the passive outdoor space or breakout space to hang out.
3. For creative/technologies class, students move to the specialist classrooms for design, woodworking, computer lessons.
4. During 'free period' for the senior students, some go to the sports court to play games. Others tend to the food production garden.



PROGRAMMATIC OPERATIONS  
MIXED USE - MODES

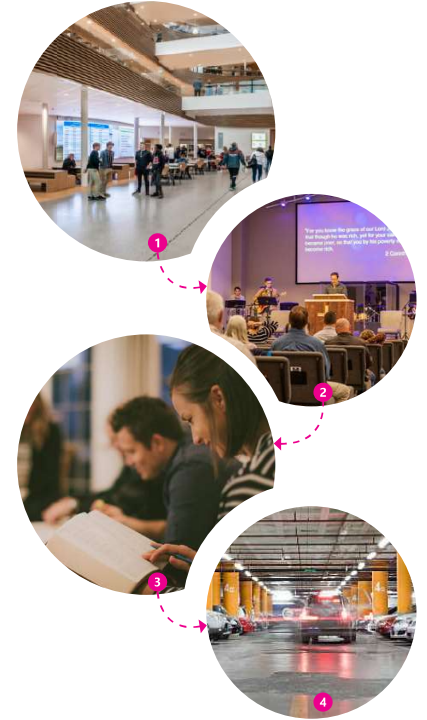
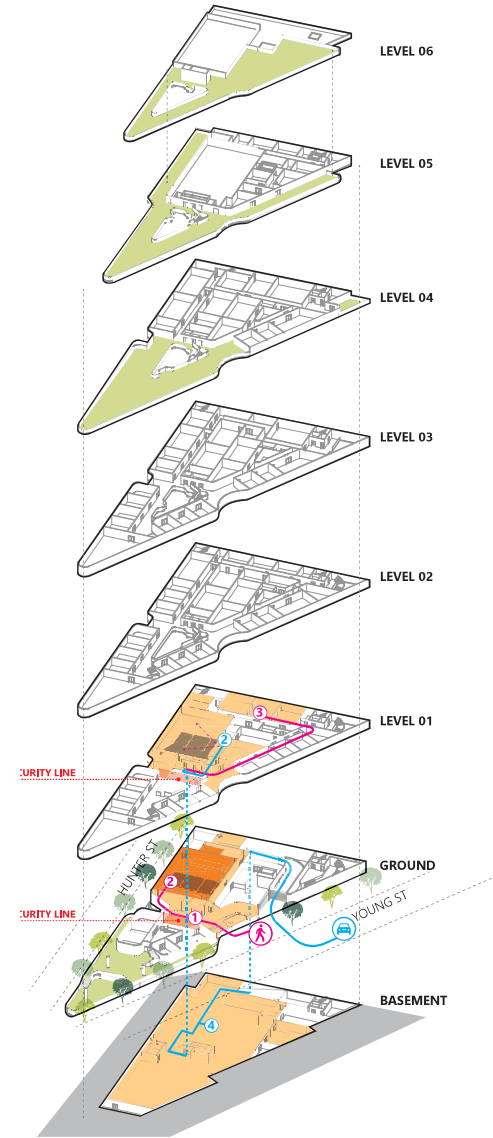
204

FILM SCHOOL  
Weekday, weekend



1. Students start their day by attending lectures/workshops.
2. In the afternoon, students head to the cafe on ground for lunch.
3. In preparation for the film screening, students go to the sound and editing lab for final adjustments.
4. Students and guests attend the screening in the cinema to watch and enjoy the final film.

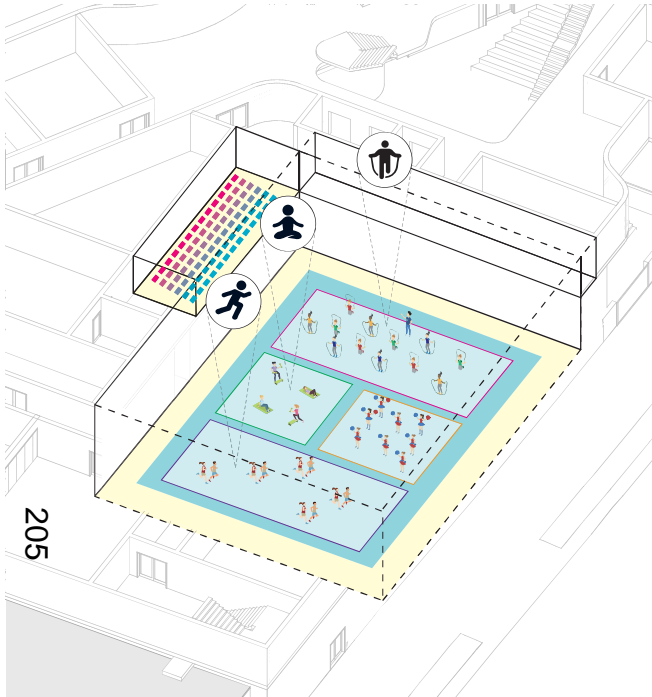
COMMUNITY / SHARED USE  
Before & after school hours, weekends



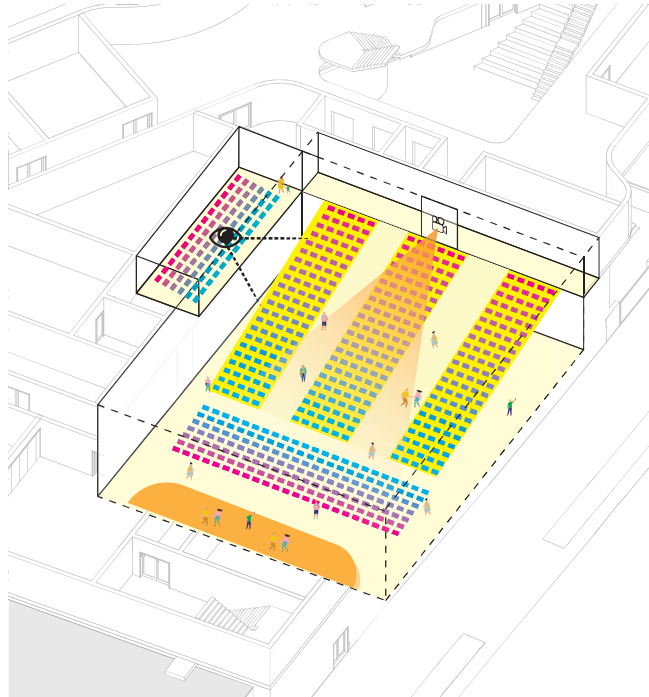
1. In the morning, people gather in the foyer space before going into the auditorium for the community gathering.
2. During the gathering, people intently listen to the various guest speakers.
3. After the various guest presentations, some people head to the flexible rooms on level 01 to have further community discussions.
4. People go back to the basement to pick up their car and drive to their next activity/destination.

PROGRAMMATIC OPERATIONS  
AUDITORIUM MODES

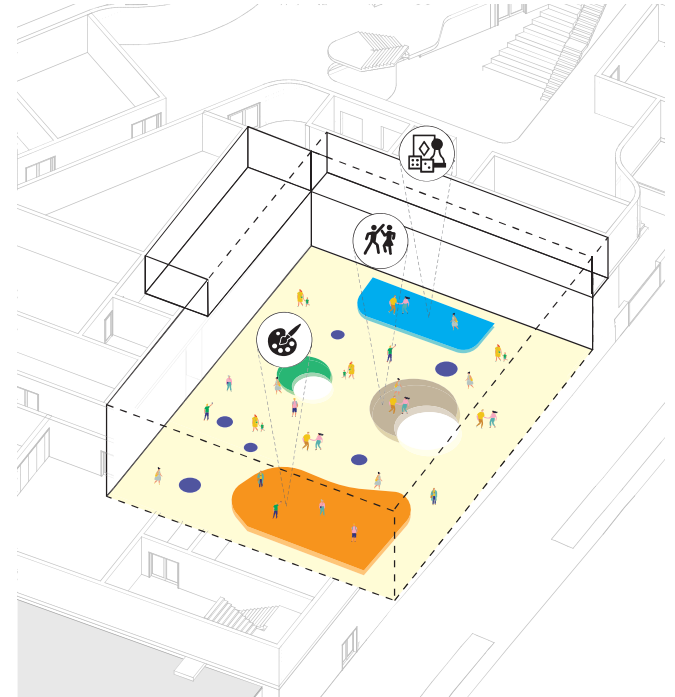
SPORT MODE



SEATING MODE



FLAT MODE



SCHOOL EXERCISE PROGRAM  
COMMUNITY SPORT COMPETITION  
WEEKEND YOGA CLASS  
REGULAR SCHOOL HIRE

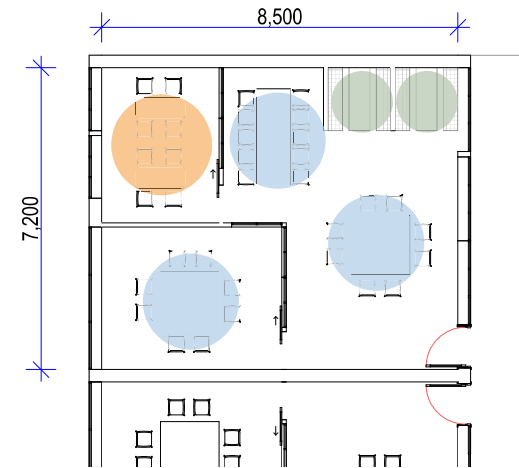
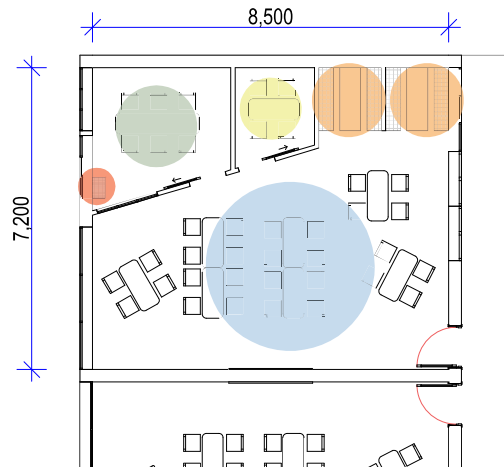
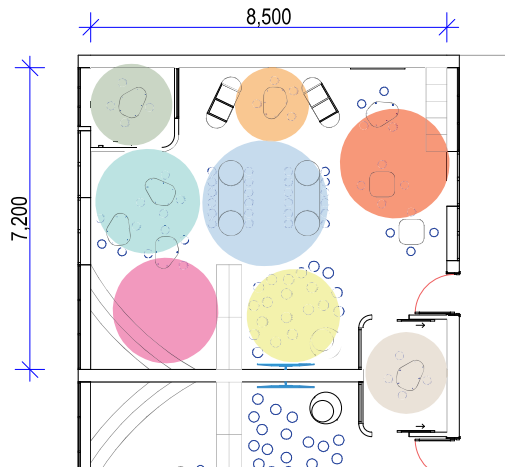


PERFORMANCE AND PLAYS  
SCHOOL ASSEMBLY  
COMMUNITY GATHERING  
GUEST SPEAKER

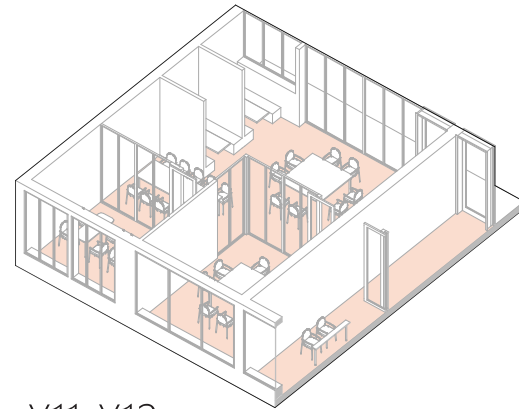
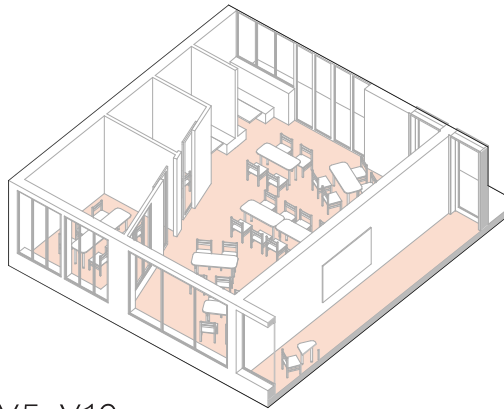
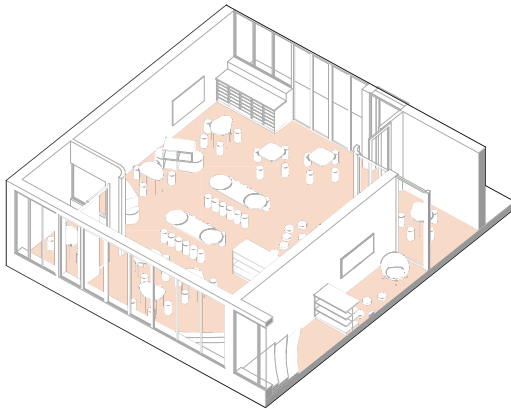


SCHOOL ART EXHIBITION  
WEEKEND LOCAL MARKET  
SCHOOL DISCO  
FASHION HALL

# FLEXIBLE CLASSROOM MODULES



206



K-Y4

- **SHARED READING HUB**  
1 x WALL MOUNTED LCD  
1 x MODULAR BOOK SHELF
- **READERS HUB**  
PLATFORM SEATINGS  
1 x MODULAR BOOK SHELF
- **READERS HUB**  
TECH HUB STORAGE  
1 x TABLE
- **CENTRALISE LEARNING SPACE**  
24 x SEATS  
2 x LONG TABLE  
1 x MOBILE WHITE BOARD
- **WRITER SPACE**  
12 x SEATS  
3 x TABLE
- **SHARED BREAKOUT ROOM**  
5 x SEATS
- **MATHS WALL**  
1 x MATHS WALL  
30 x TRAY STORAGE
- **ACCELERATED INTERVENTION**  
1 x TEACHING STATION

Y5-Y10

- **BREAK OUT ROOM**  
1 x TABLE  
4 x CHAIRS
- **COLLABORATION BOOTH**  
4 x STUDENT PER BOOTH WITH LCD
- **CENTRALISE LEARNING SPACE**  
24 x SEATS  
6 x LONG TABLE  
1 x WALL MOUNTED WHITE BOARD
- **PEER REVIEW OBSERVATION**

Y11-Y12

- **COLLABORATION BOOTH**  
4 x STUDENT PER BOOTH WITH LCD
- **WITHDRAWAL**  
4 x STUDENT PER TABLE  
2 x TABLE
- **ELECTIVE LEARNING SPACE**  
26 x SEATS  
3 x LARGE TABLE
- **PEER REVIEW OBSERVATION**